

PS21k C-SF42-40

Solar surface pump system

Applications

- Drinking water supply
- Pond management
- Irrigation
- Livestock watering
- Pressurizing systems

Characteristics

- Fast, failure-free installation
- Excellent serviceability
- High reliability and life expectancy
- Short Return of Investment (ROI) cycle
- Lower Total Cost of Ownership (TCO)

Technical data

Total dynamic head	max. 80 m
Flow rate	max. 67 m ³ /h
Vmp*	> 575 V
Voc	max. 800 V

Standards

CE 2006/42/EC, 2004/108/EC, 2006/95/EC

The logos shown reflect the approvals that have been granted for this product family. Products are ordered and supplied with the approvals specific to the market requirements.



Components

Controller: PS21k

- Controlling and monitoring
- Control inputs for dry running protection, remote control etc.
- Protected against reverse polarity, overload and overtemperature
- Integrated MPPT (Maximum Power Point Tracker)
- Data logger

Motor:

- Highly efficient 3-phase AC motor
- Frequency 50 Hz
- No electronics in the motor

Pump end: PE C-SF42-40

- High reliability and life expectancy
- Premium materials
- Optional: dry running protection

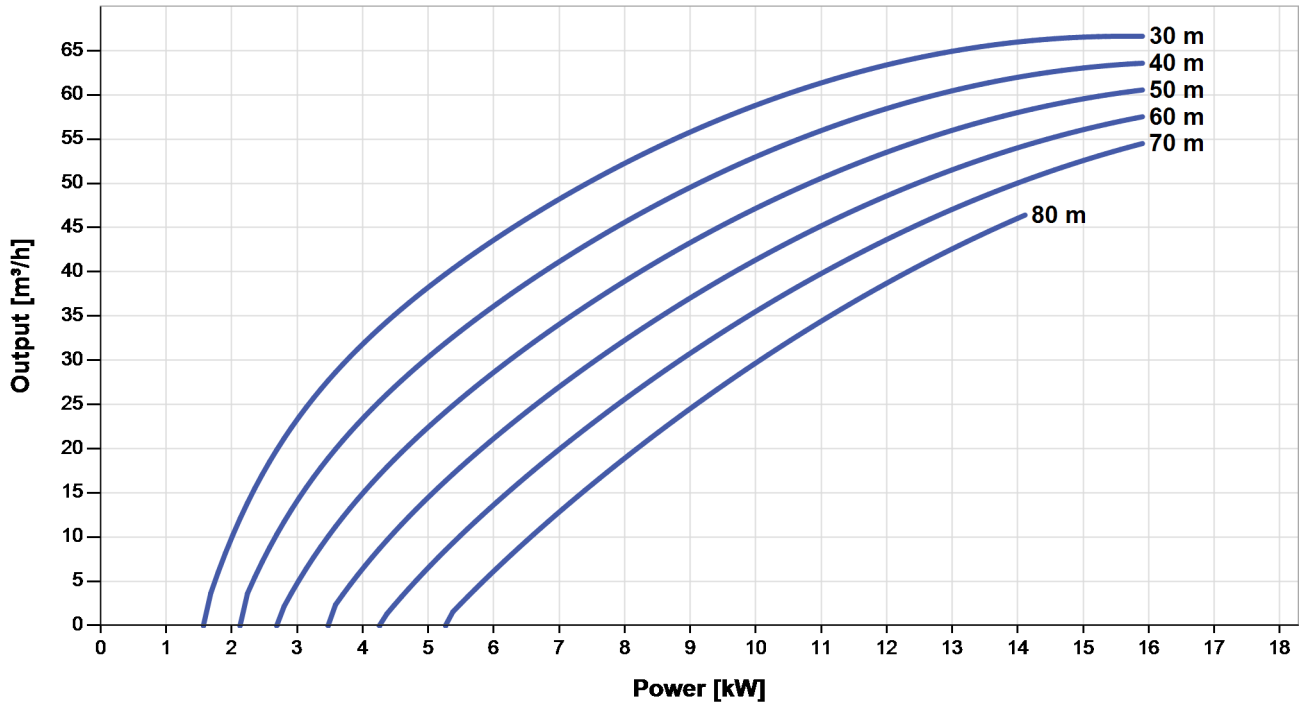


PS21k C-SF42-40

Solar surface pump system

Pump chart

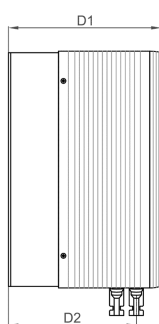
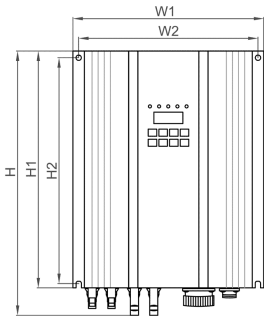
V_{mp}* > 575 V



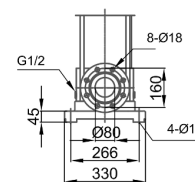
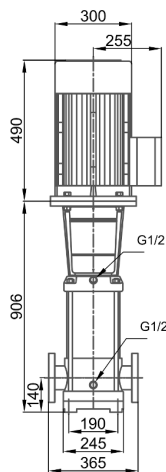
Dimensions and weights

Controller

H = 350 mm
 H1 = 310 mm
 H2 = 295 mm
 W = 250 mm
 W1 = 235 mm
 D = 200 mm
 D1 = 200 mm
 D2 = 167 mm



Pump unit [mm]



	Net weight
Controller	9.0 kg
Pump unit	195 kg
Motor	130 kg
Pump end	65 kg

*V_{mp}: MPP-voltage under Standard Test Conditions (STC): 1000 W/m² solar irradiance, 25 °C cell temperature

